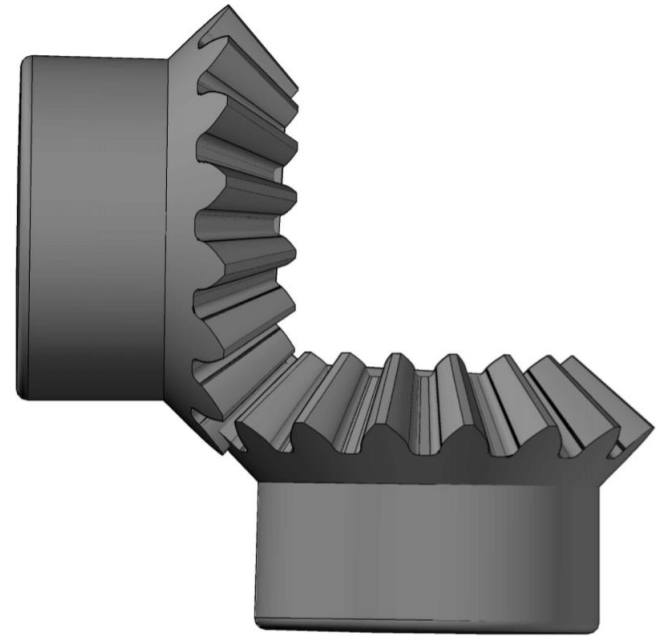
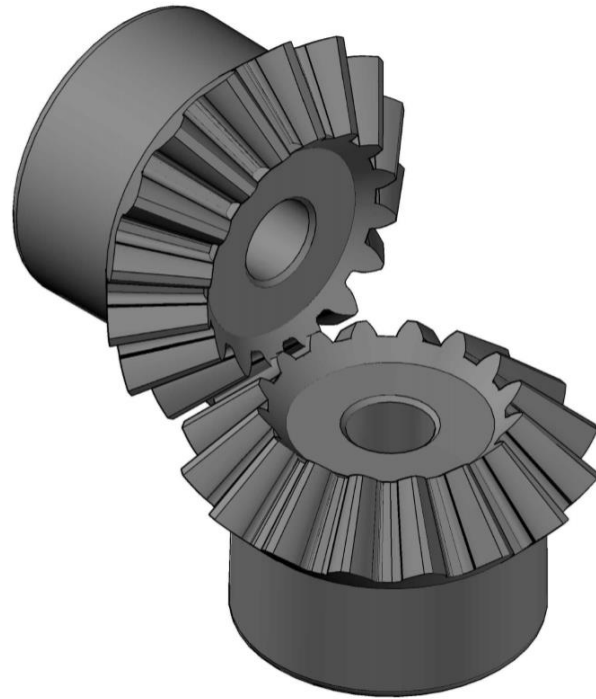
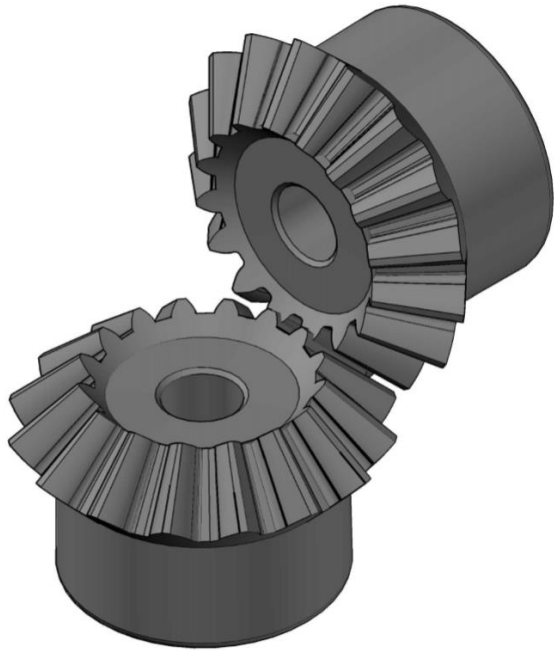
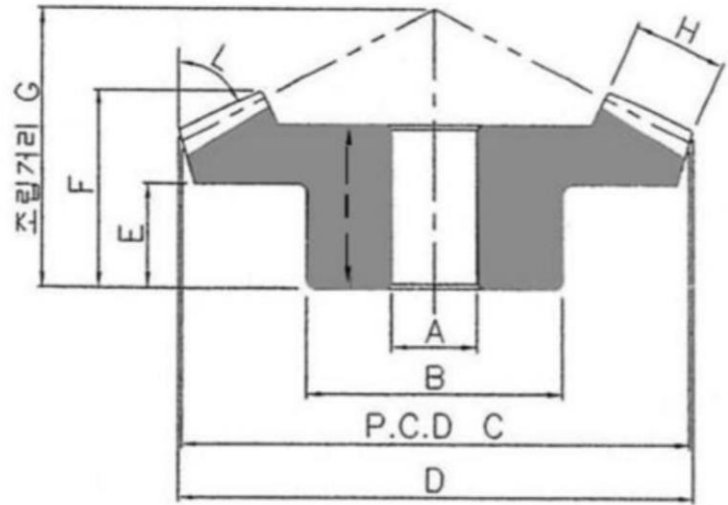
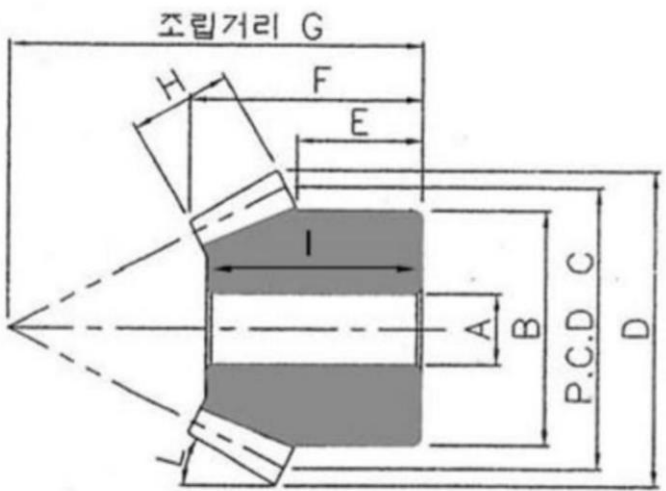
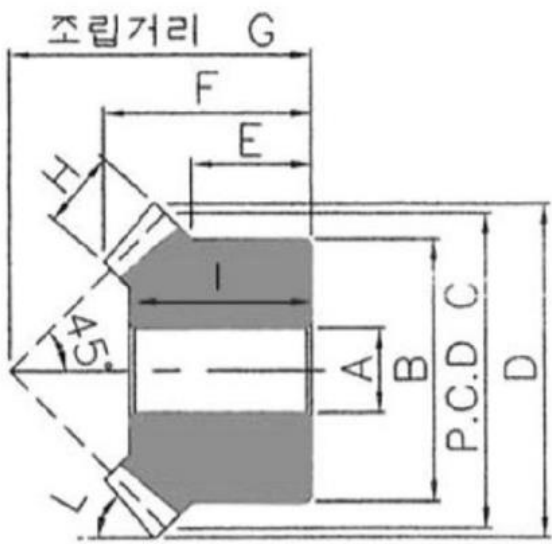


베벨기어 (BEVEL GEAR)





모듈	잇수비 1:1 20T/20T (L:49.8°)								
	A	B	C	D	E	F	G	H	I
M1	6	16	20	21.4	8	13.9	20	5	12
M1.5	6	26	30	32.1	13	21.2	30	8	19
M2	8	34	40	42.8	14	24.9	37	10	22
M2.5	10	42	50	53.5	19	32.5	48	12	29
M3	15	50	60	64.2	23	39.8	58	15	35
M4	20	64	80	85.6	27	50.8	75	20	45
M5	20	80	100	107.1	30	60.4	90	26	54

모듈	잇수비 1:1 25T/25T (L:48.85°)								
	A	B	C	D	E	F	G	H	I
M1	6	20	25	26.4	8	15.1	23	6	14
M1.5	8	30	37.5	39.6	11.5	22.2	34	9	19
M2	10	40	50	52.8	10	24.3	40	12	20
M2.5	15	50	62.5	66	12.5	30.4	50	14	26
M3	20	60	75	79.2	15	37.8	60	20	32
M4	25	80	100	105.6	20	49.3	80	25	43
M5	25	100	125	132.1	25	60.8	100	30	50

모듈	잇수비 1:1 30T/30T (L:48.2°)								
	A	B	C	D	E	F	G	H	I
M1	6	24	30	31.4	10	17.7	28	6	16
M1.5	8	36	45	47.1	16	28.2	43	10	25
M2	10	45	60	62.8	12.5	29.4	50	12	25
M2.5	15	60	75	78.5	17	36.3	62	15	32
M3	20	70	90	94.2	20	45.5	75	20	40
M4	25	100	120	125.6	25	54.5	95	25	50
M5	25	130	150	157.1	35	68.6	120	30	62

20T/30T(1:1.5)																		
모듈	20T (L:38.27°)									30T (L:59.27°)								
	A	B	C	D	E	F	G	H	I	A	B	C	D	E	F	G	H	I
M1	8	25	30	33.1	8.8	18.6	33	9	17	10	30	45	46.2	8	18.5	28	9	16
M1.5	10	30	40	44.2	11.7	25	45	11	22	10	35	60	61.6	15	26.9	40	11	23
M2	12	35	50	55.2	12.5	31.1	55	15	28	15	45	75	77.1	18	34.2	50	15	30
M2.5	15	45	60	66.3	20	40.5	70	17	37	15	50	90	92.5	17	35.5	55	17	31
M3	15	60	80	88.3	23.2	48.5	90	20	43	20	70	120	123.3	25	47.7	75	20	40
M4	20	80	100	110.5	28.2	62.1	110	30	56	25	90	150	154.1	24	58.5	90	30	50

20T/40T(1:2)																		
모듈	20T (L:30.48°)									40T (L:65.6°)								
	A	B	C	D	E	F	G	H	I	A	B	C	D	E	F	G	H	I
M1	6	16	20	22	7	13.8	28	6	12	8	25	40	40.6	8	15.1	22	6	12
M1.5	8	25	30	33.6	14.7	25.5	46	10	24	10	38	60	60.9	15	25	35	10	22
M2	12	32	40	44.8	18	34.2	60	15	32	12	40	80	81.2	18	32.4	45	15	27
M2.5	12	40	50	56	22.5	43.8	75	20	41	15	50	100	101.5	20	39.7	55	20	35
M3	15	50	60	67.2	27.5	50.8	90	22	47	20	70	120	121.7	24	45.8	65	22	38
M4	20	60	80	89.6	35	66.6	120	28	62	20	80	160	162.3	28	53.9	80	28	45
M5	20	80	100	112	35	68.9	140	30	63	25	100	200	202.9	26	55.3	90	30	50